



Cold Control

Application Instructions

CP020317 Rev B 05/08



**Longer Lasting. Consistent
Temperatures. Safe.**

1.



Step 1: Fill the Unit

Fill the cooler half way with ice, then fill the container with water.

NOTE: Make sure unit is unplugged before filling.

2.



Step 2: Close the Cooler

Zip the cooler closed.

3.



WARNING:
Pump must
lay flat.



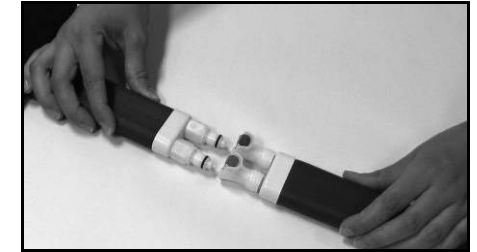
Step 3: Place the Pump

a. Using the opening at the top of the cooler, insert the pump into the cooler making sure it is completely submerged in the ice water and lays flat inside the cooler.

b. Secure the hose to the cooler using the hook and pile fasteners.

NOTE: One side of the hose has hook and the other has pile. Make sure the hook on the hose is secured to the pile on the cooler.

4.



Step 4: Connect the Pad

Attach the hose end from the unit to the hose end of the Regulated Cold Therapy Pad.

5.



Step 5: Power the Unit

Plug the power pack into the unit. Then plug the power pack into your power source.

6.



Step 6: Set Pad Temperature

Use the hand control to set the pad temperature. The pad temperature will remain between 40°F and 48°F.

REGULATED COLD THERAPY PAD APPLICATION

1. Remove pad from the package.

NOTE: *If using a sterile pad, wear sterile gloves and make sure the package was sealed and undamaged prior to use.*

2. Lay the pad over the affected area.

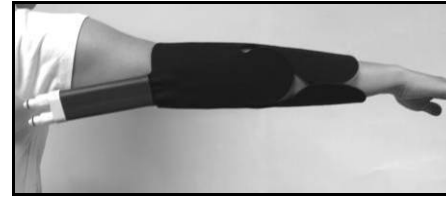
3. Use elastic wrap(s) to secure, making sure to leave the hose end accessible.

4. Connect the hose end from the pad to the hose end from the unit.

UNIVERSAL PAD (SUGGESTED APPLICATIONS)



Shoulder



Elbow



Knee



Ankle

This device is offered for sale by or on the order of a physician or other qualified medical professional. This device is not intended for reuse on a second patient. This device is generally not intended to prevent injuries or reduce or eliminate the risk of re-injury.

Indications: Indicated for immediate application following injury or operative procedures to reduce pain and swelling and aid in healing.

Warning: Do not leave this device in the trunk of a car on a hot day or in any other place where the temperature may exceed 150° F (65°C) for any extended period of time. If any additional pain or symptoms occur while using this device, discontinue use and seek medical attention.

Warranty: This device is warranted to be free from defects in material and workmanship for a period of 90 days. These warranties apply to devices that have not been modified or subjected to misuse, abuse or neglect. This device is expressly subject to Bledsoe's Product Line Limited Warranty. Copies of this limited warranty can be obtained from your medical professional, via the internet at www.BledsoeBrace.com, or by calling 1-888-BLEDSOE (253-3763).

For product information or questions pertaining to sales or service, please contact the national distributor in your area or the manufacturer.

Manufactured by:

Bledsoe Brace Systems™

2601 Pinewood, Grand Prairie, Texas, 75051, USA

Toll Free Tel. **1.888.BLEDSOE** (253.3763)

Or 1.800.527.3666 • Local 972.647.0884

Local FAX 972.660.5495

International FAX 972.606.0649

www.BledsoeBrace.com

EUROPEAN AUTHORIZED REPRESENTATIVE



ORTHOMEDICO (EUROPEAN BLEDSOE SALES AGENT)
(+32) 54 504005 www.orthomedico.be