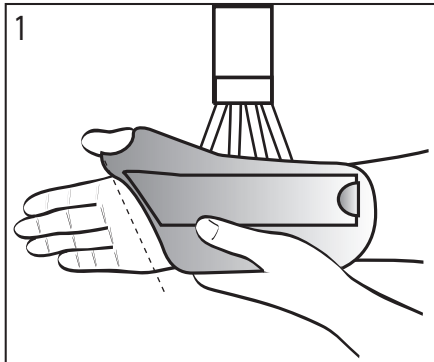


Wrist Lacer

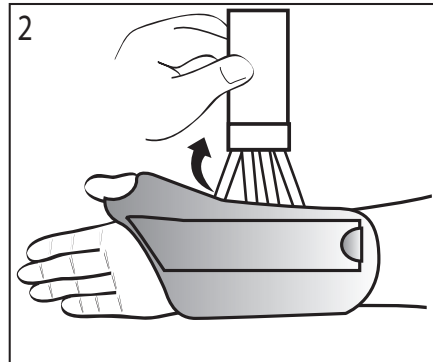
APPLICATION INSTRUCTIONS

CP020418 Rev B 08/08

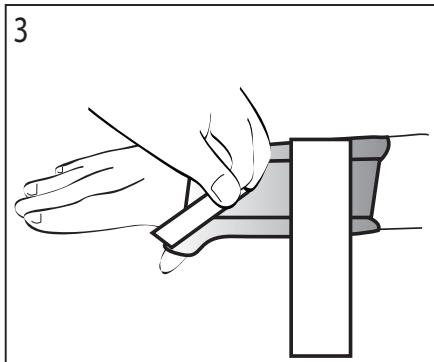
This device is offered for sale by or on the order of a physician or other qualified medical professional. This device is not intended for reuse on a second patient. This device is not intended to prevent injuries or reduce or eliminate the risk of injury.



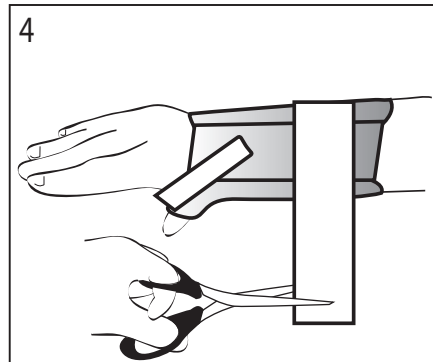
1. Position the Brace
Place hand in the brace making sure the palm stay is below the crease in the palm of the hand.



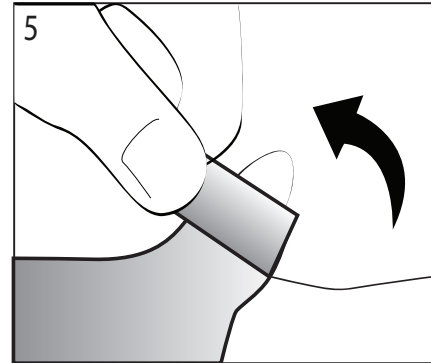
2. Tighten Laces
While maintaining the brace position, tighten laces by pulling on the strap end. Wrap and secure strap.



3. Secure Remaining Strap
Wrap and secure the narrow strap.



4. Ensure Fit
Knuckles should not be obstructed, and brace should fit snug. Trim straps if necessary.



5. Optional Thumb Spica
For versions with Thumb Spica, secure the thumb by wrapping the thumb strap around the thumb.

INDICATIONS: Indicated for Carpal Tunnel Syndrome and/or immobilization of the wrist and/or thumb.

CONTRAINDICATIONS: Contraindicated for unstable fractures of the wrist.

WARNINGS: Do not leave this device in the trunk of a car on a hot day or in any other place where the temperature may exceed 150°F (65°C) for any extended period of time. If any additional pain or symptoms occur while using this brace, discontinue use and seek medical attention.

WARRANTY: This device is warranted to be free from defects in material and workmanship for a period of 90 days. This warranty applies to devices that have not been modified or subjected to misuse, abuse or neglect. This device is expressly subject to Bledsoe's Product Line Limited Warranty. Copies of this limited warranty can be obtained from your medical professional, via the internet at www.BledsoeBrace.com, or by calling 1.888.BLED SOE (253.3763).



Council Directive 93/42/EEC
of 14 June 1993 concerning Medical devices

MANUFACTURED BY:
BLED SOE BRACE SYSTEMS™
2601 Pinewood; Grand Prairie, Texas, 75051, USA
Toll Free Tel: 1.888.BLED SOE (253.3763) • 1.800.527.3666
Local: 972.647.0884 • Local Fax: 972.660.5495
International Fax: 972.606.0649
www.BledsoeBrace.com

EUROPEAN AUTHORIZED REPRESENTATIVE

EC	REP	EMERGO EUROPE Molenstraat 15 2513 BH, The Hague The Netherlands Tel: (+31) 70 345 8570 Fax: (+31) 70 346 7299
----	-----	--